



I.C.L.E.I

Local  
Governments  
for Sustainability

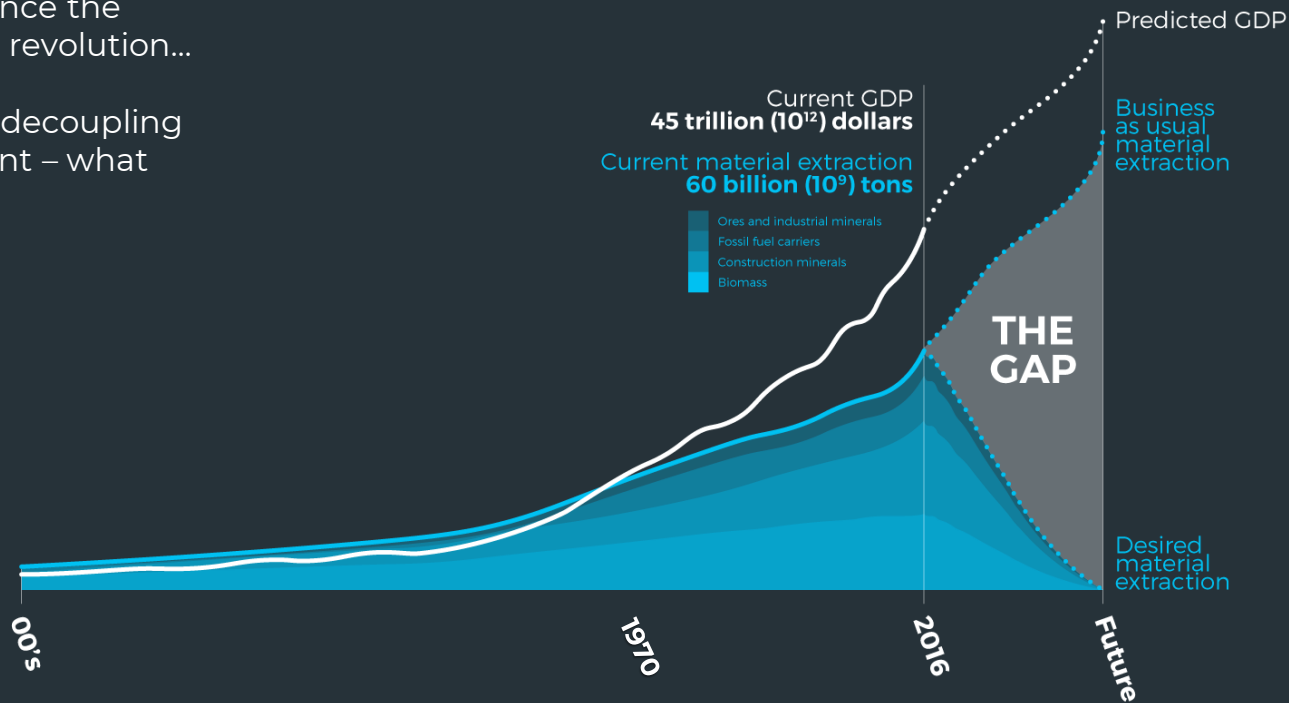
EUROPE

Connect • Innovate • Accelerate

## Material extraction

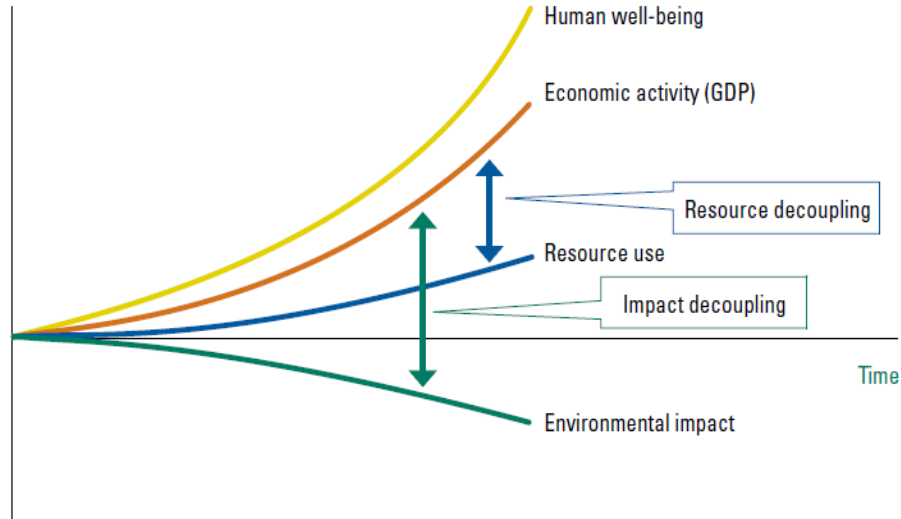
has fueled economic growth since the industrial revolution...

Absolute decoupling not evident – what now?



Source: UNEP (2011) after Krausmann et al. 2009, adapted by Circle Economy

# DECOUPLING EFFECTS



Source: UNEP (Ed.), 2011. Decoupling natural resource use and environmental impacts from economic growth. Kenya, UNEP.

- **How to achieve resource- and impact decoupling?**
- End of the pipe technologies and increased innovation and technology -> limited decoupling impact
- Holistic, systemic solutions!



# CITIES ARE KEY

**1.2%** of the earth's surface

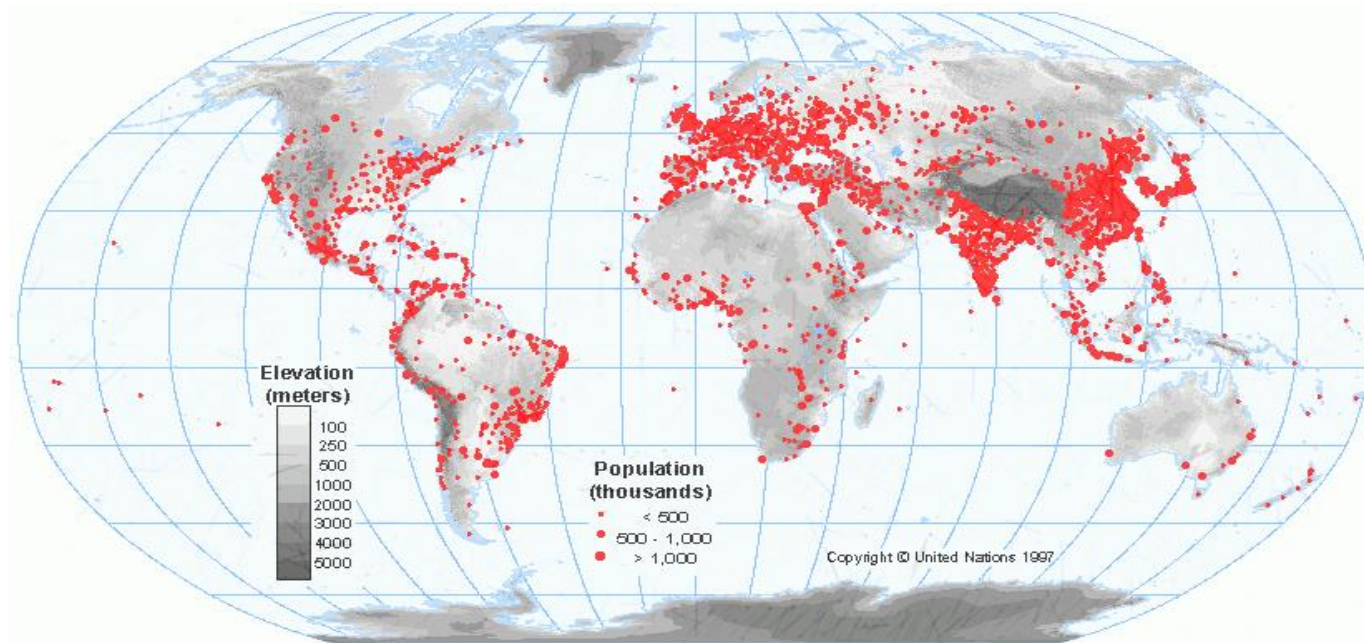
**55%** of global population

**75%** of energy consumption and CO2 Emissions

**60%** of global material use

**100** of the largest cities =

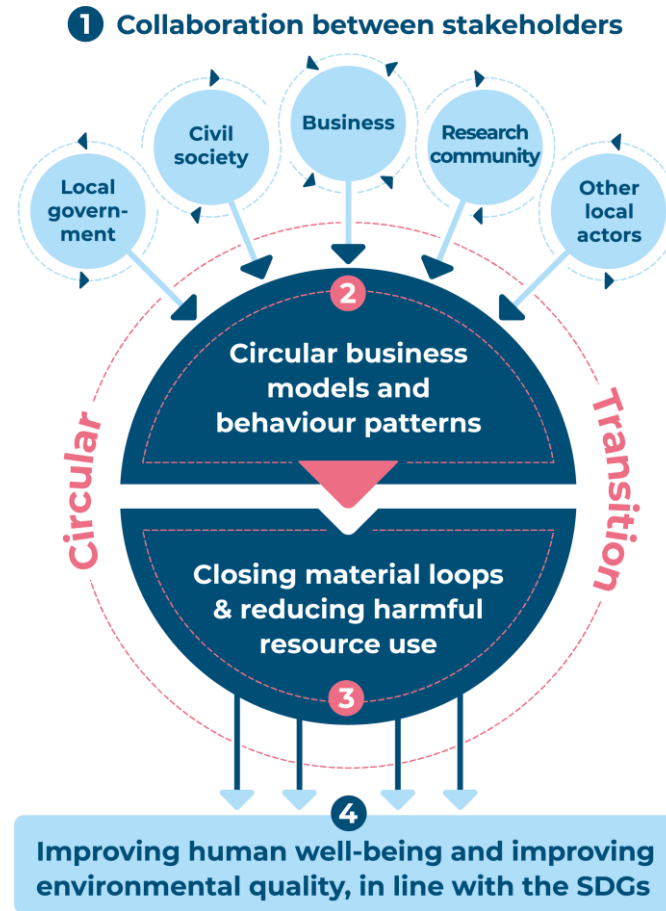
**30%** of the global GDP



# CIRCULAR CITIES

## ICLEI's vision for circular cities

- **A city of circular integration:** where circular principles are applied across all city functions.
- **A city that generates and retains value:** where innovative design and production methods, service-based business models and consumption behaviour prioritise maintaining the value and utility of assets.
- **A city of closed loops:** where products and materials are kept in use, and waste and harmful resource use is minimised.
- **A liveable city:** of low-emissions, regenerated natural systems and improved human health and wellbeing.



# CIRCULAR CITIES

## Local government levers to support the transition

---

- **VISION** – They can provide a common vision through roadmaps or strategies that give direction to the local circular transition.
- **ENGAGEMENT** – Relating to stakeholder engagement, local governments have a privileged role as facilitator between public, private and civic leaders, which can be used to convene and partner with others in co-creation of the shared system change, raise awareness of circular opportunities through communication campaigns and lead capacity building to train and advise other local actors.
- **URBAN MANAGEMENT** – Under the mandate of urban management, cities can enshrine circularity in urban planning and asset management, and can also leverage their own public procurement.
- **ECONOMIC INCENTIVES** – To accelerate implementation of the circular economy, local governments should use economic incentives including financial support such as grants, subsidies, or public-private partnerships to encourage circular innovation and fiscal measures to incentivise a behaviour change by shaping the market in favour of circularity.
- **REGULATION** – Legislation and regulation should enshrine in policy the political commitment and enabling conditions for a fully circular economy, and cities should inform and work with national and international institutions to support this effort.

# CIRCULARCITIES DECLARATION



The **European Circular City Declaration** allows local and regional governments across Europe to communicate their commitment to supporting the transition from a linear to a circular economy in Europe, and thereby create a resource-efficient, low-carbon and socially responsible society

Developed by:

**Current signatories: 31**

**Join us!**

[www.circularcitiesdeclaration.eu](http://www.circularcitiesdeclaration.eu)



# FOUNDING SIGNATORIES

---

## Albania:

- Tirana

## Belgium:

- Ghent
- Leuven
- Mechelen

## Czech Republic:

- Prague

## Denmark:

- Copenhagen
- Høje-Taastrup
- Roskilde

## Finland:

- Helsinki
- Lappeenranta
- Mikkeli
- Oulu
- Tampere
- Turku

## France:

- Grenoble

## Germany:

- Freiburg im Breisgau

## Hungary:

- Budapest

## Italy:

- Florence
- Prato

## Luxembourg:

- Wiltz

## Norway:

- Bergen
- Oslo

## Portugal:

- Braga
- Guimarães
- Melgaço

## Slovenia:

- Ljubljana
- Maribor

## Spain:

- Seville

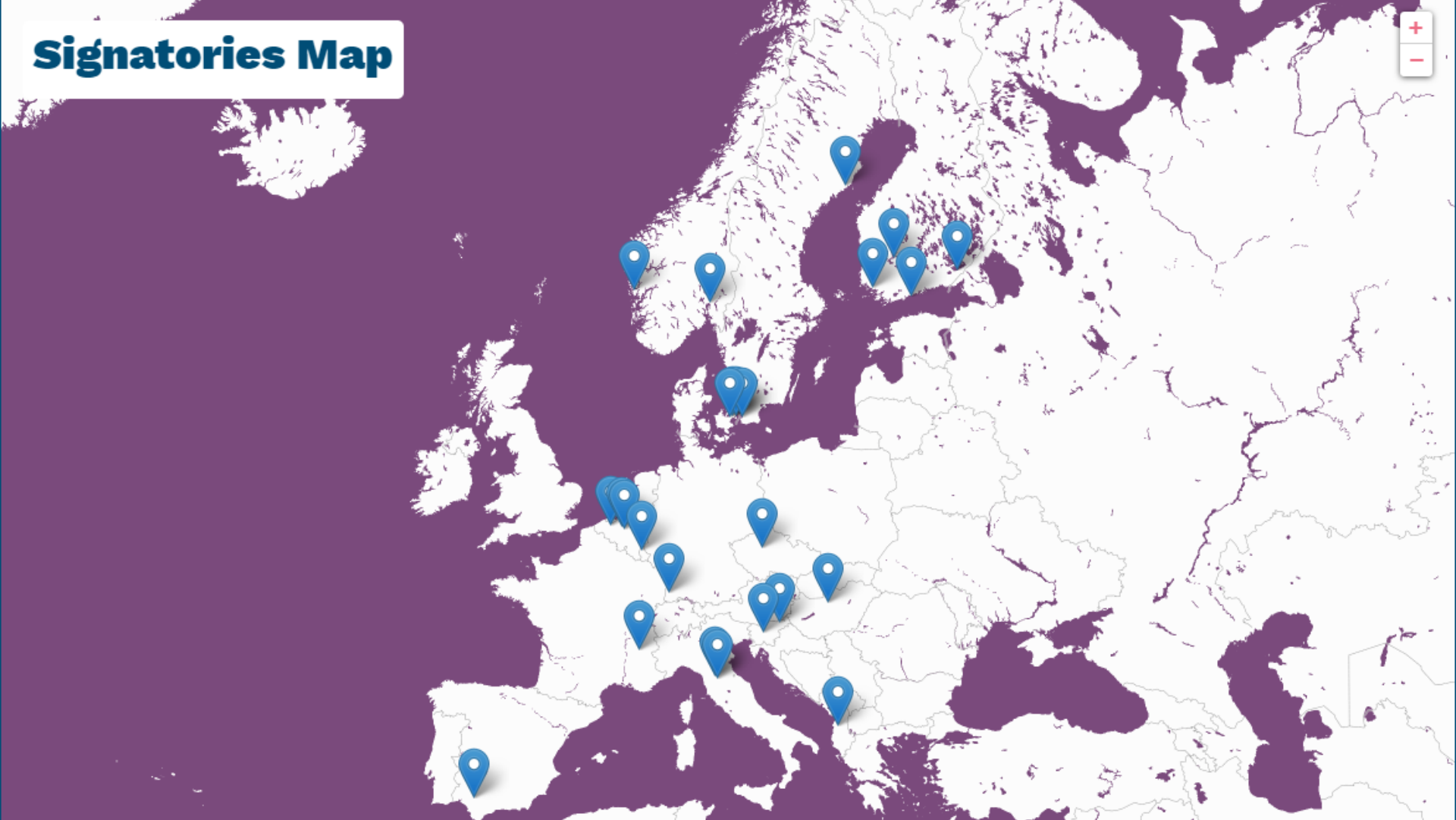
## Sweden:

- Eskilstuna
- Malmö
- Umeå

**Join us!** [www.circularcitiesdeclaration.eu](http://www.circularcitiesdeclaration.eu)



# Signatories Map



# CIRCULAR CITY PROBLEMAUFRISS

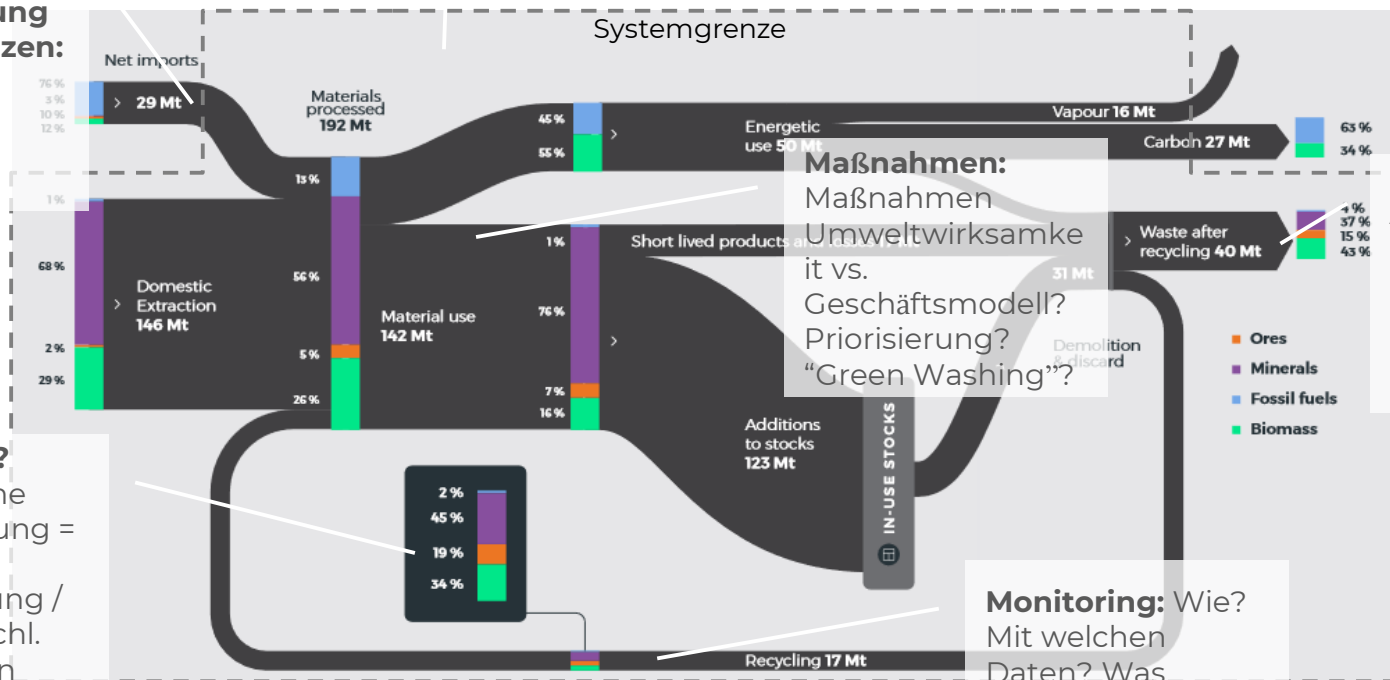
**Kommunale Hebel:** Strategie/Vision, Stakeholder Beteiligung, Beschaffung, kommunale Liegenschaften, regulatorische Rahmensetzung

## Wechselwirkung & Systemgrenzen:

Grenzen der lokalen Betrachtung

## Auswirkung?

mehr zyklische Materialnutzung = positive Umweltwirkung / Jobs & menschl. Wohlbefinden



Source: Jacobi et al. 2018, adapted by Circle Economy

# PlastiCircle (H2020)

- Over 25.8 Mt of plastic waste in the EU (50kg per citizen), with only 29.7% recycled, while 39.5% is incinerated and **30.8% goes to landfill**
- **Plastic packaging** represents 63% of the total plastic waste, only 34% of it is recycled -> **huge environmental impact and is a clear waste of resources** (10 bn€ in EU market loss)
- **PlastiCircle**: 06/2017-05/2021, 20 partners, 7.7 M€, 1.59 Mt reduction in non-recycled plastic packaging waste, 2.09 Mt reductions in associated CO2
- PlastiCircle aims at designing **an improved, smart waste management system that covers all stages** from collection to recycling and implements this in 3 pilot cities: Alba Iulia, Utrecht and Valencia
- Turning plastic waste into a valuable resource through a holistic approach will support the **achievement of EU targets**, such as the goal to recycle 75% of packaging waste by 2030, and ultimately benefit society.



This project has received funding from the European Union's Horizon 2020

# CircPack (H2020)

---

- EU H2020-funded project (€7.3 Mio, May 2017-Apr. 2020), 22 partners from 7 EU countries
- The CIRC-PACK project will:
  - Create, test and validate alternative **bio-based** and **recyclable plastics** for trays, bottles, coffee capsules, jars, films and pallets
  - Develop **new types of multilayer** and multi-material **packaging**
  - Increase the amount of recycled materials into other industries
  - **Improve recycling rates** and **quality** of recovered materials
  - **Contribute to circular economy** leading to a more sustainable future (improved LCA and LCC results)



This project has received funding from the European Union's Horizon 2020

# CONTACTS

## ICLEI EUROPE

The ICLEI European Secretariat is based in Freiburg (Germany) with offices in Brussels (Belgium) and Berlin (Germany).

**Name** Nikolai Jacobi

**Position** Senior Officer

Energy, Material & Built Infrastructure

**Email** nikolai.jacobi@iclei.org



iclei-europe.org



ICLEI\_Europe



@ICLEI\_Europe



@ICLEI\_Europe